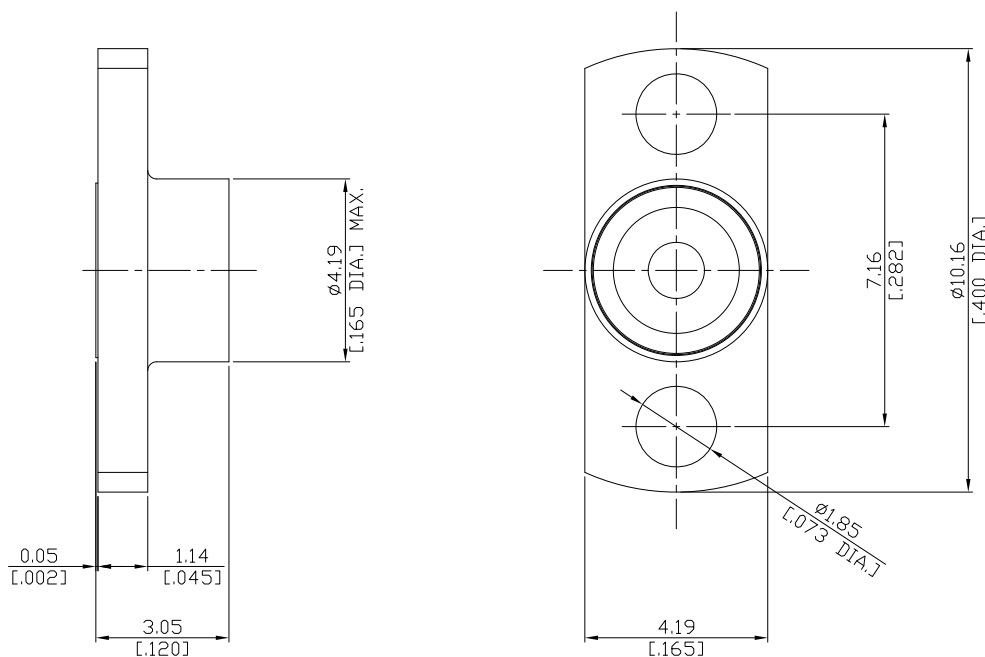


SMP Plug limited Detent Connector Solder Attachment 2 Hole Flange Mount
Stub Terminal, 7.16mm (.282 inch) Hole Spacing

SMP1GTA50-LD0305A / -X



All dimensions are in mm [inch]

Tolerances according to DIN ISO 2768-mH

Interface

According to

MIL-STD-348A/326 (Limited Detent)

Mechanical Data

Coupling mechanisms

Snap-lock

Mating Cycles

≥ 500

Environmental Data

Temperature Range

-65°C to +165°C

Thermal shock

MIL-STD-202, Method 107, Condition B

Vibration

MIL-STD-202, Method 204, Condition B

Shock

MIL-STD-202, Method 213, Condition A

Moisture Resistance

MIL-STD-202, Method 106

RoHS

compliant

Material And Plating

Piece Parts

Material

Plating

Body

Stainless Steel

Passivated

Packing

Single or 100